



EU Arbeitsplatzgrenzwerte

Wer arbeitet daran und mit welchen Methoden?

Part 1 – DG EMPL & SCOEL

Karola Grodzki
DG EMPL B.3

Diskussionsveranstaltung Arbeitsschutzrecht und REACH
Berlin, 9. Mai 2017



Legal basis and types of Occupational Exposure Limits at EU level

Chemical Agents Directive 98/24/EC

Article 3: The Commission shall evaluate the relationship between the health effects of hazardous chemical agents and the level of occupational exposure by means of an independent scientific assessment of the latest available scientific data.

Carcinogens and Mutagens Directive 2004/37/EC

Article 16... set out limit values on the basis of the available information, including scientific and technical data.

Types of OEL

Indicative; Binding; Biological

Setting of OELs for carcinogens at EU level follows the ordinary legislative procedure

1

Selection of chemicals for SCOEL Evaluation

DG EMPL establishes lists of priorities for scientific evaluation based on inputs from various sources and application of priority criteria.

2

SCOEL Recommendation

DG EMPL issues mandates to SCOEL, who will deliver as a rule the exposure-risk-relationships (ERR) for non-threshold carcinogens, or a practical threshold when possible. SCOEL Recs are subject to external consultation before adoption.

3*

WPC - ACSH

The Working Party on Chemicals (WPC) discusses the SCOEL Recommendation and various feasibility issues and comes up with a consensus based suggestion for the OEL value. This is integrated in a draft opinion for adoption by the Plenary of ACSH.

4

Impact Assessment (IA)

DG EMPL drafts IA containing policy options and associated impacts. IA is discussed within and Interservice Steering Group and submitted to the Regulatory Scrutiny Board (RSB). A positive reply is required.

5

Draft legislative proposal

DG EMPL prepares the draft legislative proposal and submits it to inter-service consultation and a final draft legislative proposal is prepared.

6

College of Commissioners

The College of Commissioners adopts the proposal and sends it to Council and Parliament for negotiation and subsequent adoption.

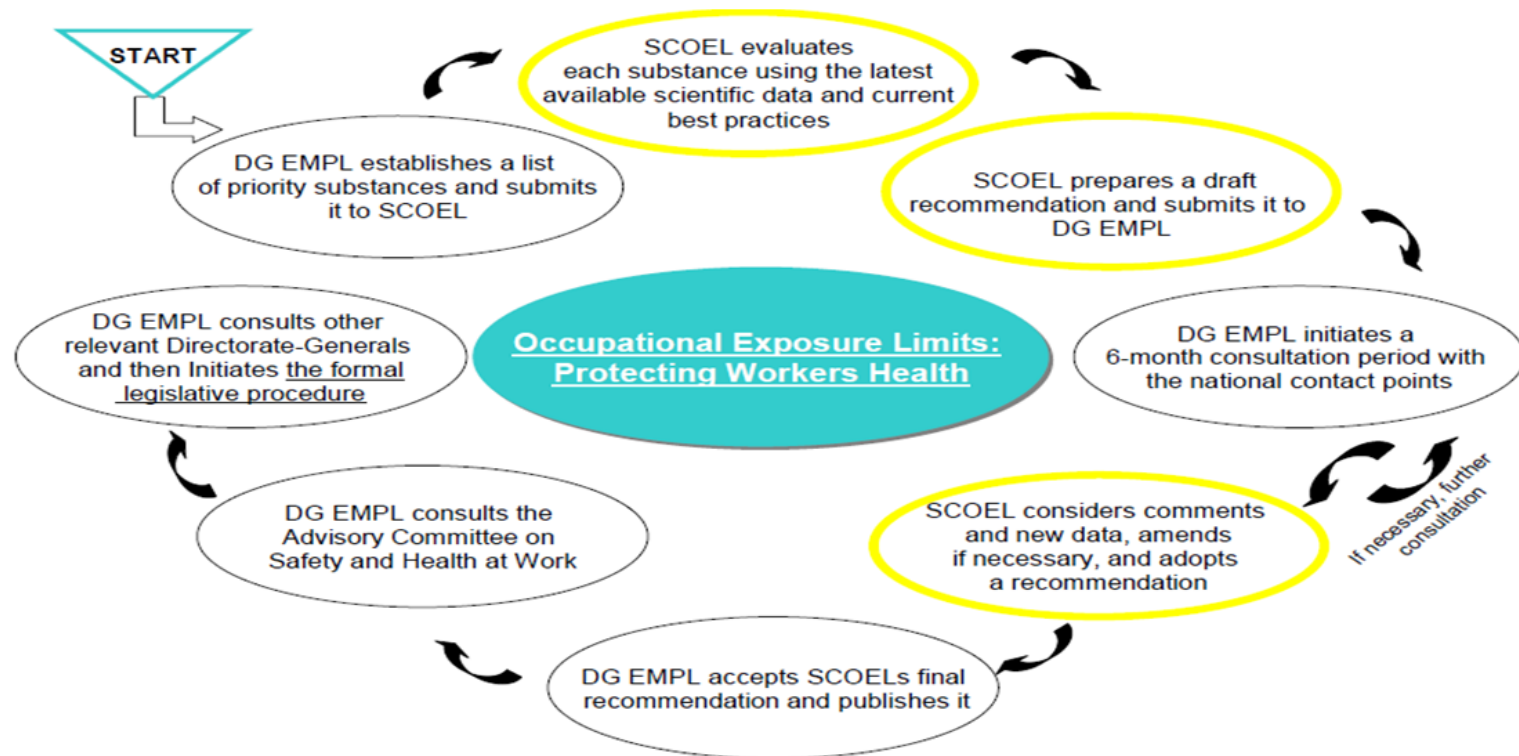
7

Adopted Directive published in EU Official Journal

MSs will transpose text into national legislation by the date set in the Directive.

*2 stages of social partners' consultation have to be carried out in accordance with article 154 of TFEU

SCOEL involvement in setting Occupational Exposure Limit Values





European
Commission

The legislative procedure for developing EU OELs

